

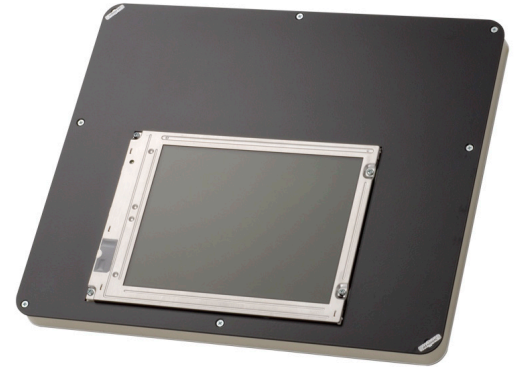
ad notam LCD CO-SERIES

CO 10.4"

MIRROR IMAGE® is the engine that drives images through glass and mirror to deliver superb picture quality. All products are German made, custom-engineered, LCD technology. They are exclusively designed to overcome the unique challenges of operating in ventilation deprived environments and to allow easy and adjustable mounting. The unique optional magnet mounting system accompanying all products is distinctively designed to suit all particularized placements behind any glass surfaces.

When combined with MAGIC MIRROR®, MIRROR IMAGE® turns completely invisible when turned off. MIRROR IMAGE® technology is patent protected.

Like its archetypes, the CO LINE also has an integrated amplifier for loudspeakers connection and optional HDMI Input.



PRODUCT HIGHLIGHTS

- Flush fitted monitor
- Enhanced picture quality
- Low Voltage
- Doesn't require ventilation
- Sealed casing
- Ultra slim profile
- Magnetic mounting system allows for easy installation and removal (optional)
- LCD Technology
- Auto signal detection logic
- Optional RF remote control (no IR eye needed)
- DOG system architecture
- Adjustable mounting system for particularized placement

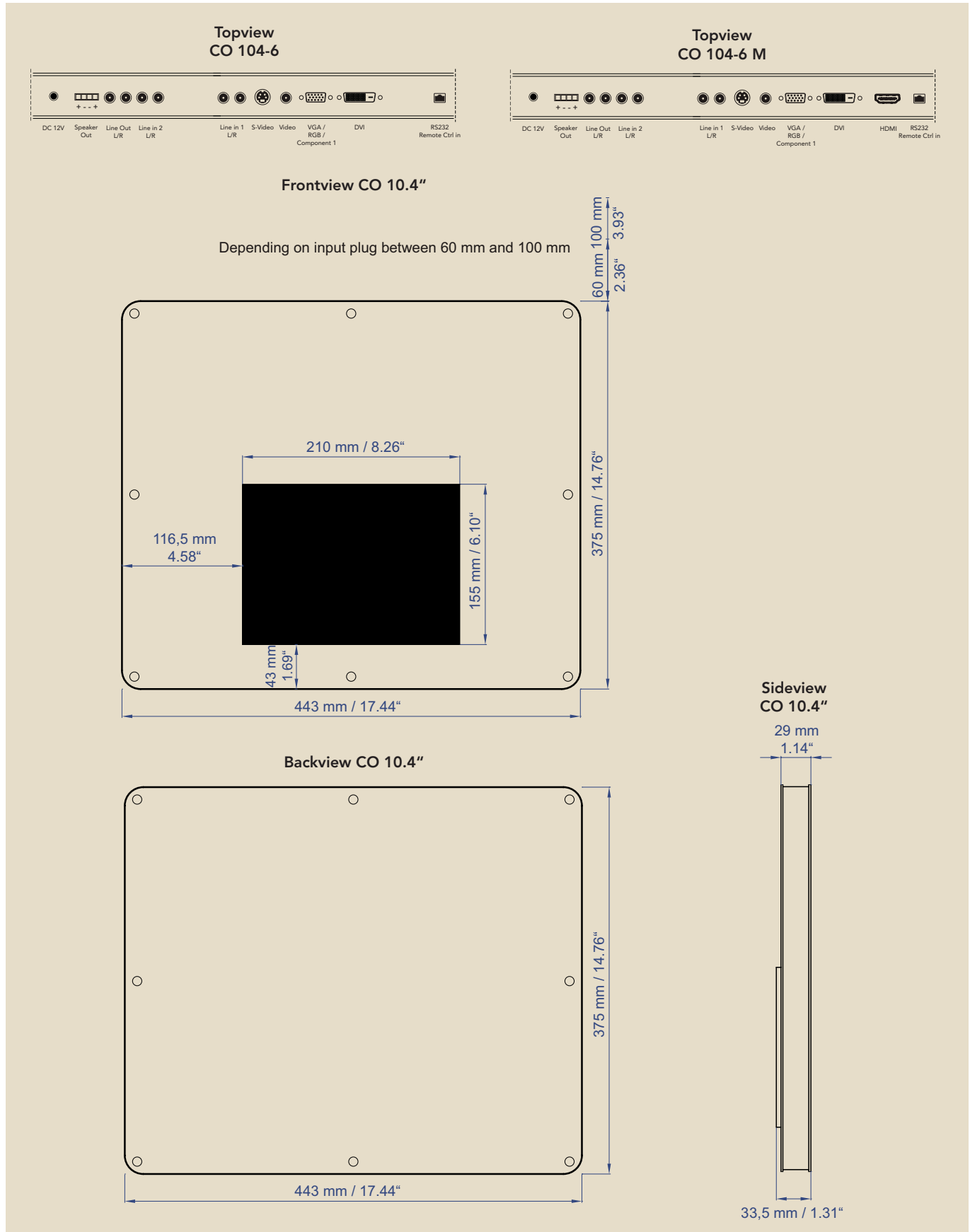
Article No.:

Screensize	Art.No.		Code	Input
10.4"	CO 104-6	→	---	no HDMI Input
			M	with HDMI Input

ad notam LCD CO-SERIES

CO 10.4"

Technical Datasheet:



ad notam LCD CO-SERIES

CO 10.4"

Screen Technology:

Art.No. / Features	CO 104-6	CO 104-6 M
Display Type	TFT Thin Film Transistor	TFT Thin Film Transistor
Active Screen Area	W x H 210 x 155 mm / 8.3" x 6.1" Diagonal 260 mm / 10.4"	W x H 210 x 155 mm / 8.3" x 6.1" Diagonal 260 mm / 10.4"
Picture Format	4:3	4:3
Physical Resolution	640 x 480	640 x 480
Viewing Angle	Horizontal 140 Vertical 110	Horizontal 140 Vertical 110
Brightness	350 cd/m2	350 cd/m2
Contrast	static 300 : 1	static 300 : 1
Response Time	14 ms	14 ms
Inputs	DVI (HDCP 1.3), AUDIO LINE IN 1/2 (L/R), AUDIO OUT, SPEAKER OUT, Y/C, RGB-S, RGB (VGA, SVGA, XVGA, SXVGA, UXGA), VGA, FBAS, RJ45	DVI, AUDIO LINE IN 1/2 (L/R), AUDIO OUT, SPEAKER OUT, Y/C, RGB-S, RGB (VGA, SVGA, XVGA, SXVGA, UXGA), VGA, FBAS, RJ45, HDMI (HDCP 1.3)
Video Signal Inputs	PAL / SECAM, NTSC	PAL / SECAM, NTSC
Operating Temperature	5 to 50 Celsius / 41 to 122 Fahrenheit	5 to 50 Celsius / 41 to 122 Fahrenheit
Power	DC 12V 40 W / 3400 mA	DC 12V 40 W / 3400 mA
Weight	5,1 kg	5,1 kg
Amplifier Output	4 x Phoenix-clip, 9.6W RMS@4 Ohm per Channel	4 x Phoenix-clip, 9.6W RMS@4 Ohm per Channel
Equalizer	5-Band	5-Band
Tuner Receiver	---	---
Tuner Channels	---	---
Receivable Tuner Channels	---	---
FM Radio	---	---
Image flip	180° selectable	180° selectable
Interactive Port RJ45	IR/RF Input RS 232 (optional) LED control (optional) Power control (optional)	IR/RF Input RS 232 (optional) LED control (optional) Power control (optional) HDMI switch (optional)
Remote Control Code	definable	definable



ad notam LCD CO-SERIES

CO 10.4"

Power Supply:

Power	Voltage		Type	Operating Temperature
	IN	OUT		
70 W / 5,5 A	90 – 264 Vac	12 V DC	NE-T 70	0 - 40 °C



Remote Control (Infrared):

Type	Feature	Dimensions B x H x D
AQUA-IR-4	Water resistant	110 x 58 x 38 mm 4.33" x 2.28" x 1.44"

